



Fil-Trek

SLDV SERIES

Duplex
Side Line Bag Filter Housing
ASME Design/Industrial Design
Universal



Water



Desalination



Chemicals



Electronics



Oil/Gas



Air/Gas



Inks/Paints/ Coatings



Power



Coolants



Pulp & Paper

SLDV SERIES Duplex Single Bag Filter Housings

- Duplexed, single bag, side in, bottom out configuration.
- Continuous operation duplex basket housings.
- Economic multi-purpose, ASME code and non-code designed housings.
- 150psig (10.3bar) @ 250°F(121.1°C) design pressure.
- Manufactured to accept single and multiple bag filters.
- Vessels available in carbon steel, stainless steel 304 or 316.
- Available in swing bolt and v-band closures.

For pricing or to order, please contact



204 North Link Lane #7
Fort Collins, CO 80524
Office 970-204-4758
Fax 970-204-4764

brandon@industrialfiltersource.com

SLDV SERIES

Duplex
Side Line Bag Filter Housing
ASME Design/Industrial Design
Universal

Housing Specifications

Inlet/Outlet
2" Flange - 3" Flange
2" - 3" 150# NPT

Inlet/Outlet Connection Types
FNPT
Flange

Clean Drain
1/2" NPT

Vent
1/2" NPT

Gauges
1/2" NPT

Basket
1/8" on 3/16" perforated plate
*Other basket options available.

Certifications
U
UM
CE
NB
CRN

SLDV SERIES

Fil-Trek's SL DV Duplex series are ideal for use in industrial and commercial applications where flow rates vary between 110 and 240 GPM. Each model is available in carbon steel and stainless steel 304 and 316 and has a standard design pressure of 150psi (10 bar) @ 300°F.

Each model is standard with the following:

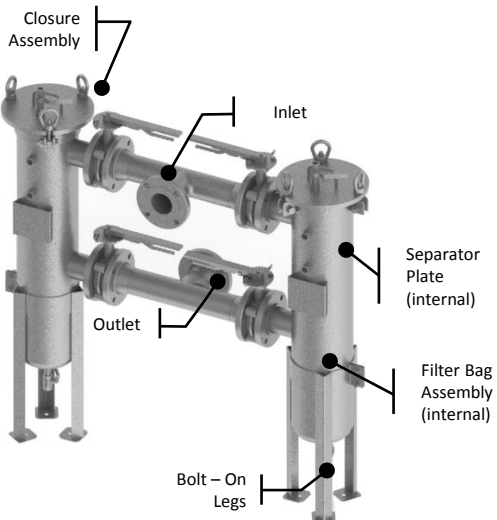
- Two (2) SL Series housings in duplex configuration.
- Swing-bolt or v-band closure
- Bead blast finish
- Buna-N gasket
- 2 gauge ports (each housing)
- Fully welded construction throughout
- Standard 1/8" on 3/16" perforated basket
- Adjustable carbon steel leg assembly



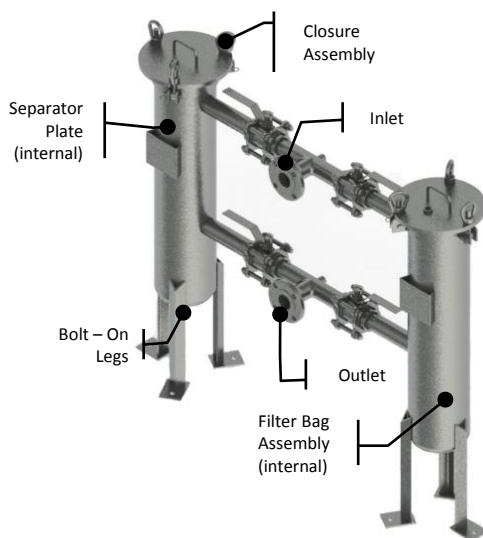
MODEL FLOW RATES

MODEL	BAG SIZE	FLOW RATE (GPM)
SLDV211-2F	1	110
SLDV211-3F	1	240
SLDV212-2F	2	110
SLDV212-3F	2	240

Flow rates are based on water at 2psid through empty housing with basket. Actual flow rate is dependant on fluid viscosity, micron rating, and media type. For actual flow rates based on your process, please contact Fil-Trek Corporation.



BALL VALVE CONFIGURATION



BUTTERFLY VALVE CONFIGURATION

For pricing or to order, please contact



204 North Link Lane #7
Fort Collins, CO 80524
Office 970-204-4758
Fax 970-204-4764
brandon@industrialfiltersource.com

MATERIAL OF CONSTRUCTION	MAX. OPERATING PRESSURE (PSI @250°F)	MAX. DESIGN TEMP
CARBON STEEL	150 psi (10.3bar)	300°F (150°C)
304 STAINLESS STEEL	150 psi (10.3bar)	300°F (150°C)
316 STAINLESS STEEL	150 psi (10.3bar)	300°F (150°C)

MODEL DIMENSIONAL DETAILS

MODEL	WEIGHT (LBS)	A	B	C
SLDV211-2F	180	15"	35 1/4"	46 3/16"
SLDV211-3F	195	16"	35 1/4"	46 3/16"
SLDV212-2F	220	19"	42 3/8"	50 3/4"
SLDV212-3F	235	20"	42 3/8"	50 3/4"

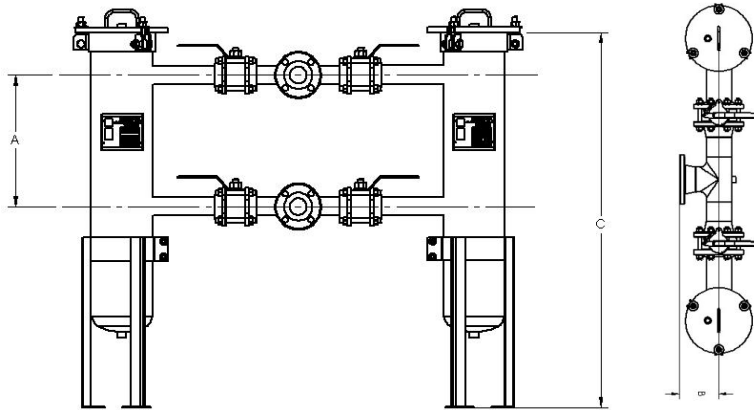
REFERENCE CHART LEGEND

A	INLET TO OUTLET
B	CENTRE TO FACE
C	OVERAL LENGTH

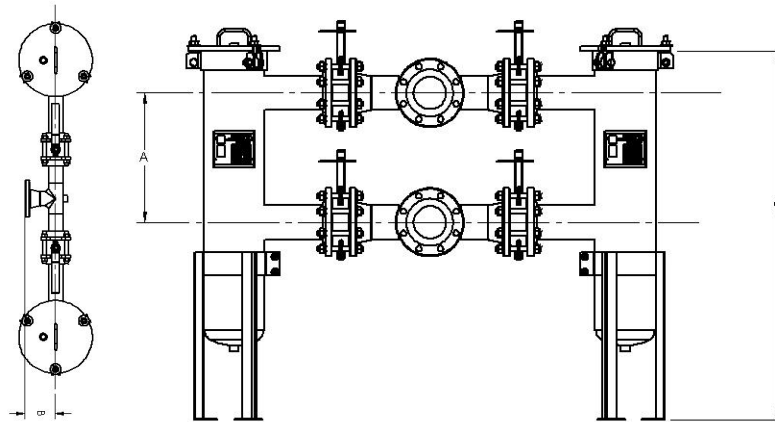
Dimensions above are based on standard configuration 'C', side in-bottom out. Contact factory for weights and dimensions for all other model configurations

CONFIGURATION OPTIONS

BALL VALVE CONFIGURATION



BUTTERFLY VALVE CONFIGURATION



Configuration Options

- A – Side in/side out (standard)
- C – Side in/Bottom out
- D – Side in/out Same Side

Basket Options

- (-) – 1/8" on 3/16" perforated basket (standard)
- MB__ - Mesh lined basket (insert mesh size in open space)

Finish Options

- (-) – External paint "National Blue" (Standard for carbon steel housings)
- (-) – Bead Blast (standard for stainless steel 304 and 316)
- EP1 – Electro polish Inside/Outside
- EP2 – Inside only
- EP3 – Outside only
- PP – Passivation

O-Ring Options

- (-) – Buna-N (standard)
- ED – EPDM
- V1 – Viton
- S1 – Silicone
- TEV – Teflon encapsulated Viton

Duplex Valve Options

- V1 – Ball Valves
- V2 – Butterfly Valves

Accessories

- Direct Reading Gauge
- DP Gauge
- Safety Relief Valves
- Vent Valves
- Drain Valves
- Air Eliminator
- Omega Springs
- Balloon/Liquid Displacer
- Bag Magnets

FIL-TREK PRODUCT NOMENCLATURE

S6	SLDV	2	12	3F	SW	A	-	-	-
MATERIAL	MODEL	# OF BASKETS	BASKET LENGTH	CONNECTION TYPE	CLOSURE STYLE	CONFIGURATION	BASKET	FINISH	O-RING
- CARBON	SLDV ASME CODE	1	11 SIZE 1	2P 2" NPT (STD)	SW SWING BOLT	A (STD) SIDE IN/SIDE OUT			
S4	ESLDV		12 SIZE 2	2F 2" FLANGE	VB* V-BAND	C SIDE IN/BOTTOM OUT	SEE SIDE PANEL FOR OPTIONS		
S6	NON-CODE			3P 3" NPT		D SIDE IN/SIDE OUT SAME SIDE			
SS316				3F 3" FLANGE					

*V-BAND ONLY AVAILABLE FOR ESL SERIES (NON-CODE)

For pricing or to order, please contact



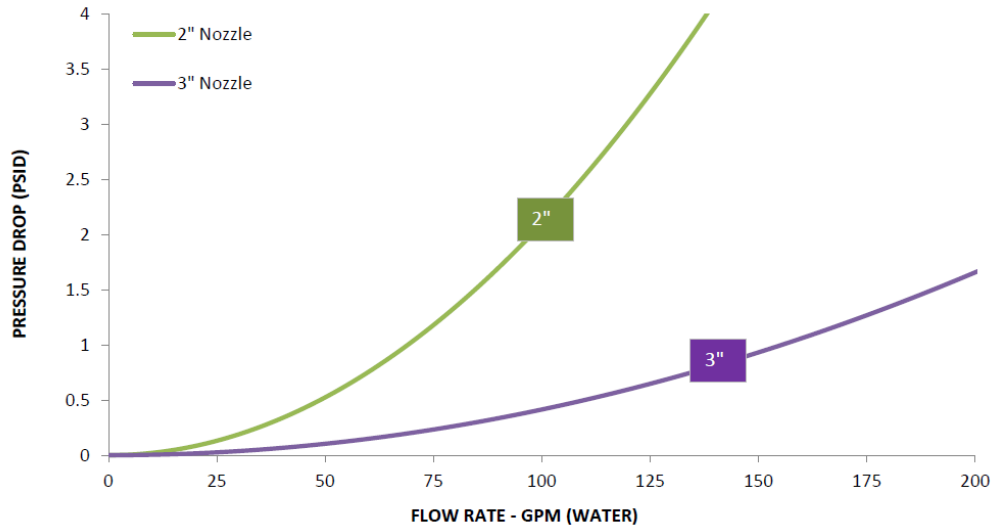
204 North Link Lane #7
Fort Collins, CO 80524
Office 970-204-4758
Fax 970-204-4764

brandon@industrialfiltersource.com

SLDV SERIES

Duplex
Side Line Bag Filter Housing
ASME Design/Industrial Design
Universal

FLOW CHART



For pricing or to order, please contact



204 North Link Lane #7
Fort Collins, CO 80524
Office 970-204-4758
Fax 970-204-4764
brandon@industrialfiltersource.com