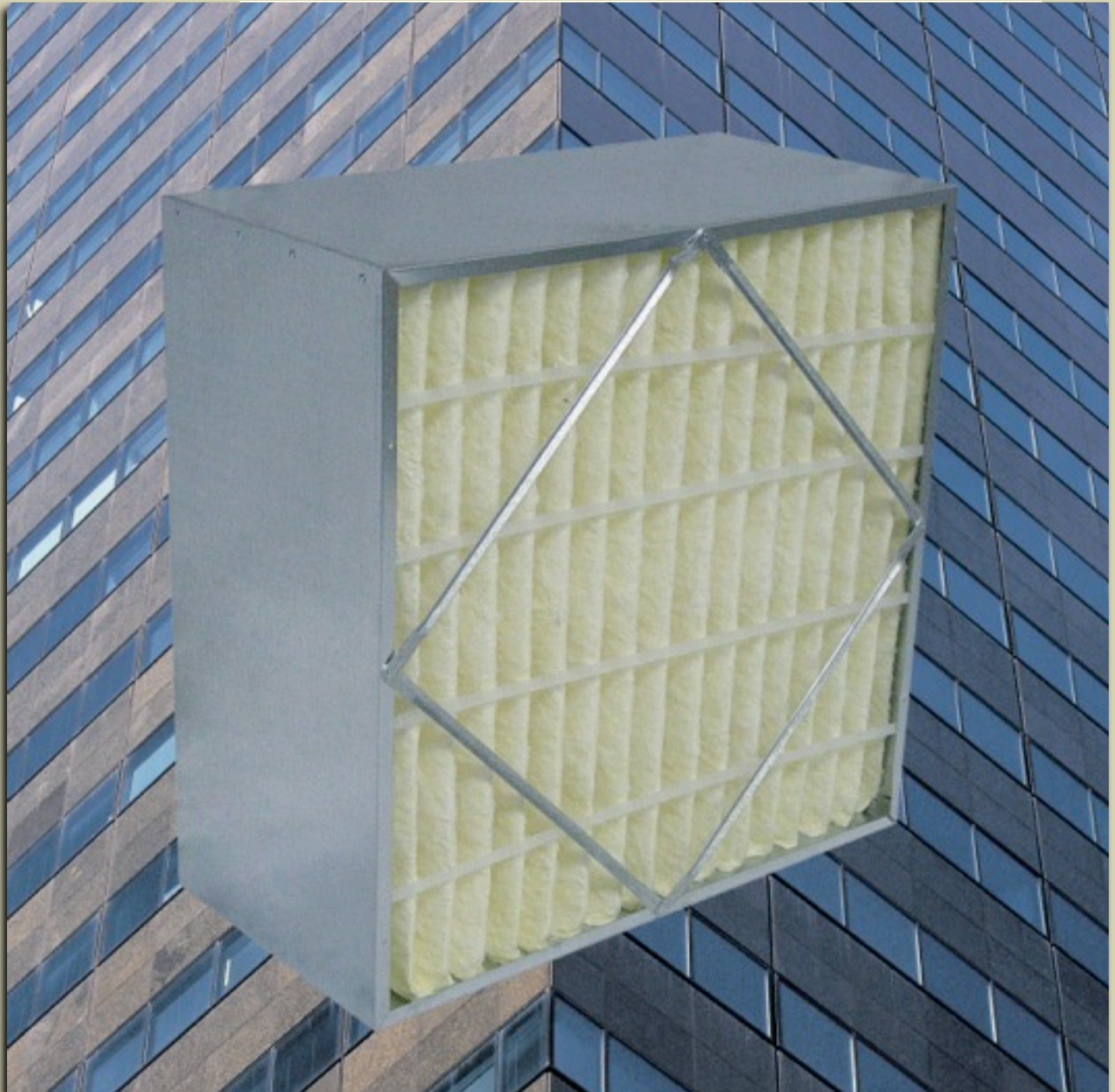
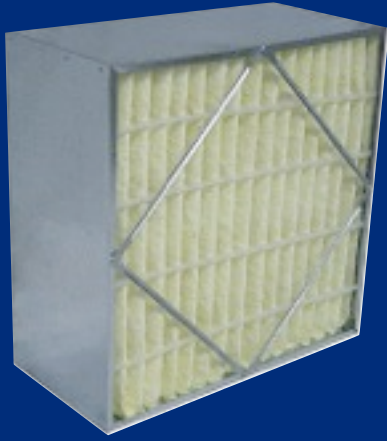


**TRI DIM**  
FILTER CORPORATION

# TRI-CELL R & SYN-PAC R

High Efficiency Rigid Filters





## TRI-CELL R AND SYN-PAC R EXTENDED SURFACE RIGID FILTERS OFFER SUPERIOR PERFORMANCE, RUGGED CONSTRUCTION, AND A WIDE RANGE OF EFFICIENCIES.

# TRUSTED

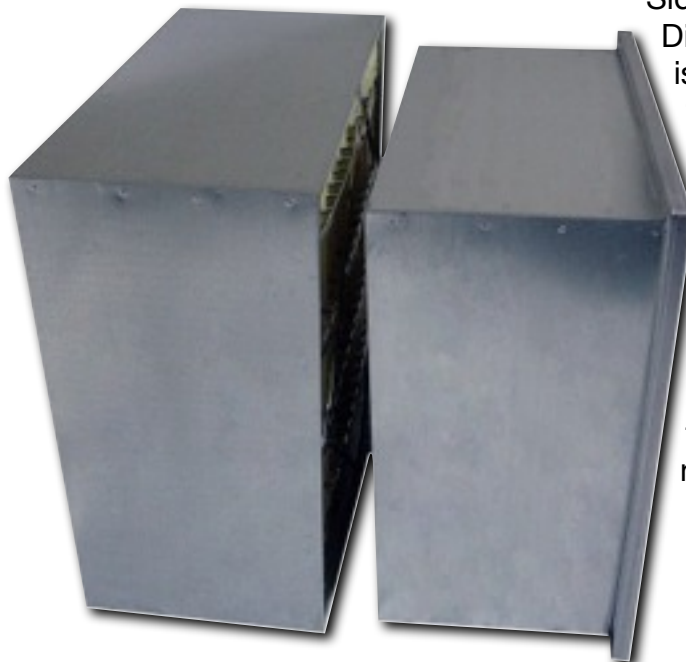
**MEDIA OPTIONS** - Tri-Dim's Rigid Cell family offers both fiberglass and synthetic medias. Tri-Dim's TRI-CELL R offers fiberglass media, a high loft, depth loading micro-glass media. Tri-Dim's fiberglass media offers strong mechanical filtration properties and provides proven removal efficiencies throughout the filters life.

Tri-Dim's SYN-PAC R filters feature 100% synthetic media. Tri-Dim's SYN-PAC media offers high initial efficiency, low resistance and reduced fiber shedding.



**FRAME STYLES** - TRI-CELL R and SYN-PAC R filters are offered in a no header 'box' style or a single header style frame – both are constructed of galvanized steel. Tri-Dim's Single Header Style frame will fit into any OEM

Side Access Housing. Tri-Dim's No Header 'Box' Style is designed to fit into holding frame applications that utilize spring clips – both the TRI-CELL R and SYN-PAC R come with holes predrilled for spring clip use.

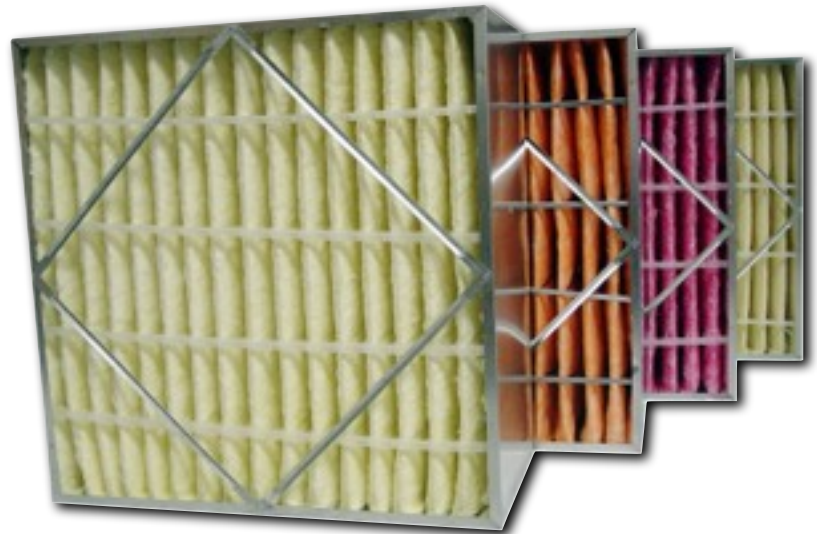


Tri-Dim offers both the TRI-CELL R and SYN-PAC R filters in both 12" and 6" nominal depths.



**EFFICIENCY OPTIONS** -TRI-CELL R and SYN-PAC R filters are offered in a wide variety of ASHRAE efficiencies. Available efficiencies are 45-50% (MERV 11), 60-65% (MERV 12), 80-85% (MERV 13) and 90-95% (MERV 15).

This broad offering of efficiencies allows for use in a wide range of applications and will allow for easy efficiency upgrades when needed.



*TRI-CELL R filters (l to r) 45-45%, 60-65%, 80-85% and 90-95%*



*Plastic, Cardboard and Metal (l to r) Finger Media Separators*

**FILTER CONSTRUCTION** - The Tri-Dim Rigid Cell family utilizes a galvanized steel frame and cardboard or plastic finger media separators on our standard versions of the TRI-CELL R and SYN-PAC R filters. Metal finger media separators are available in the all-metal 'RM' versions, see below for more information.

The TRI-CELL R and SYN-PAC R filters utilize an expanded metal, rust resistant wire support grid that is bonded to the media for added media support.

**ADDITIONAL OPTIONS:**

**TRI-CELL RM and SYN-PAC**

**RM** – Both the TRI-CELL R and SYN-PAC R are offered in all metal versions featuring metal finger media separators.

**GASKETING** – Optional gasketing is available on both the TRI-CELL R and SYN-PAC R filter. Appropriate gasketing is recommended on all high efficiency filters to eliminate the bypass of unfiltered air.



*All Metal "RM" Version*

# PRODUCT SPECIFICATIONS

## SPECIFICATION SYN-PAC R SERIES

## SPECIFICATION TRI-CELL R SERIES

**MEDIA:**

**Lofted Synthetic**

**RECOMMENDED FINAL RESISTANCE:**

**1.5" W.G. (373 PA)**

**Media Area (No Header Version):**

<b>24x24x12</b> 610x610x305	<b>58 Sq Ft</b> 5.4 m <sup>2</sup>
<b>24x12x12</b> 610x305x305	<b>28 Sq Ft</b> 2.6 m <sup>2</sup>
<b>24x24x6</b> 610x610x152	<b>29 Sq Ft</b> 2.7 m <sup>2</sup>
<b>24x12x6</b> 610x305x152	<b>14 Sq Ft</b> 2.0 m <sup>2</sup>

**RESISTANCE:**

<b>12" Deep 90-95%</b>	<b>0.59" WG @ 500 FPM</b> 147 PA @ 2.54 m/sec
<b>6" Deep 90-95%</b>	<b>0.49" WG @ 250 FPM</b> 114 PA @ 1.27 m/sec
<b>12" Deep 80-85%</b>	<b>0.39" WG @ 500 FPM</b> 97 PA @ 2.54 m/sec
<b>6" Deep 80-85%</b>	<b>0.32" WG @ 250 FPM</b> 80 PA @ 1.27 m/sec
<b>12" Deep 60-65%</b>	<b>0.25" WG @ 500 FPM</b> 62 PA @ 2.54 m/sec
<b>6" Deep 60-65%</b>	<b>0.14" WG @ 250 FPM</b> 35 PA @ 1.27 m/sec
<b>12" Deep 45-50%</b>	<b>0.20" WG @ 500 FPM</b> 50 PA @ 2.54 m/sec
<b>6" Deep 45-50%</b>	<b>0.13" WG @ 250 FPM</b> 32 PA @ 1.27 m/sec

**RATED EFFICIENCY:**

**ASHRAE 52.1 = ASHRAE 52.2**  
 45-50% = MERV 11  
 60-65% = MERV 12  
 80-85% = MERV 13  
 90-95% = MERV 15

**MEDIA:**

**Lofted Fiberglass**

**RECOMMENDED FINAL RESISTANCE:**

**1.5" W.G. (373 PA)**

**Media Area (No Header Version):**

<b>24x24x12</b> 610x610x305	<b>58 Sq Ft</b> 5.4 m <sup>2</sup>
<b>24x12x12</b> 610x305x305	<b>28 Sq Ft</b> 2.6 m <sup>2</sup>
<b>24x24x6</b> 610x610x152	<b>29 Sq Ft</b> 2.7 m <sup>2</sup>
<b>24x12x6</b> 610x305x152	<b>14 Sq Ft</b> 1.3 m <sup>2</sup>

**RESISTANCE:**

<b>12" Deep 90-95%</b>	<b>0.69" WG @ 500 FPM</b> 172 PA @ 2.54 m/sec
<b>6" Deep 90-95%</b>	<b>0.67" WG @ 250 FPM</b> 167 PA @ 1.27 m/sec
<b>12" Deep 80-85%</b>	<b>0.48" WG @ 500 FPM</b> 119 PA @ 2.54 m/sec
<b>6" Deep 80-85%</b>	<b>0.40" WG @ 250 FPM</b> 100 PA @ 1.27 m/sec
<b>12" Deep 60-65%</b>	<b>0.32" WG @ 500 FPM</b> 80 PA @ 2.54 m/sec
<b>6" Deep 60-65%</b>	<b>0.22" WG @ 250 FPM</b> 55 PA @ 1.27 m/sec
<b>12" Deep 45-50%</b>	<b>0.30" WG @ 500 FPM</b> 75 PA @ 2.54 m/sec
<b>6" Deep 45-50%</b>	<b>0.19" WG @ 250 FPM</b> 47 PA @ 1.27 m/sec

**RATED EFFICIENCY:**

**ASHRAE 52.1 = ASHRAE 52.2**  
 45-50% = MERV 11  
 60-65% = MERV 12  
 80-85% = MERV 13  
 90-95% = MERV 15

Tri-Dim Filter Corporation is committed to continual product development – all descriptions, specifications and performance data are subject to change without notice.

Tri-Dim products are manufactured to exacting criteria - there can be a ±5% variance in filter performance. Tri-Dim® and Tri-Dek® are Registered Trademarks of Tri-Dim Filter Corporation.



**TRI-DIM FILTER CORPORATION**  
 P.O. BOX 466 • 93 INDUSTRIAL DRIVE  
 LOUISA, VA 23093  
 (540) 967-2600 • FAX: (540) 967-2835



**Local Representation:**



204 N. Link Lane #7  
 Fort Collins, CO 80524  
 Office: 970-204-4758 Fax: 970-204-4764  
 Brandon@IndustrialFilterSource.com  
 IndustrialFilterSource.com

Brochure #1500-1  
 Revision: 10/2012

