



Fil-Trek

SP SERIES

Ceramic Lined
Cartridge Filter Housings
ASME



SALINE PROTECTOR SERIES Ceramic Lined Cartridge Vessels

- Multi-purpose industrial ASME "U" & "UM" code housings.
- Excellent for sea water or other corrosive applications.
- Accepts multiple 30", 40" & 50" cartridges.
- 150psig (10.3bar) @ 250°F(121.1°C) design pressure.
- Vessels available in carbon steel, with various lining options
- Cost effective solution in comparison to AL6XN or other duplex steels.
- Swing bolt closure allows for quick element change out.

For pricing or to order, please contact



204 North Link Lane #7
Fort Collins, CO 80524
Office 970-204-4758
Fax 970-204-4764

brandon@industrialfiltersource.com

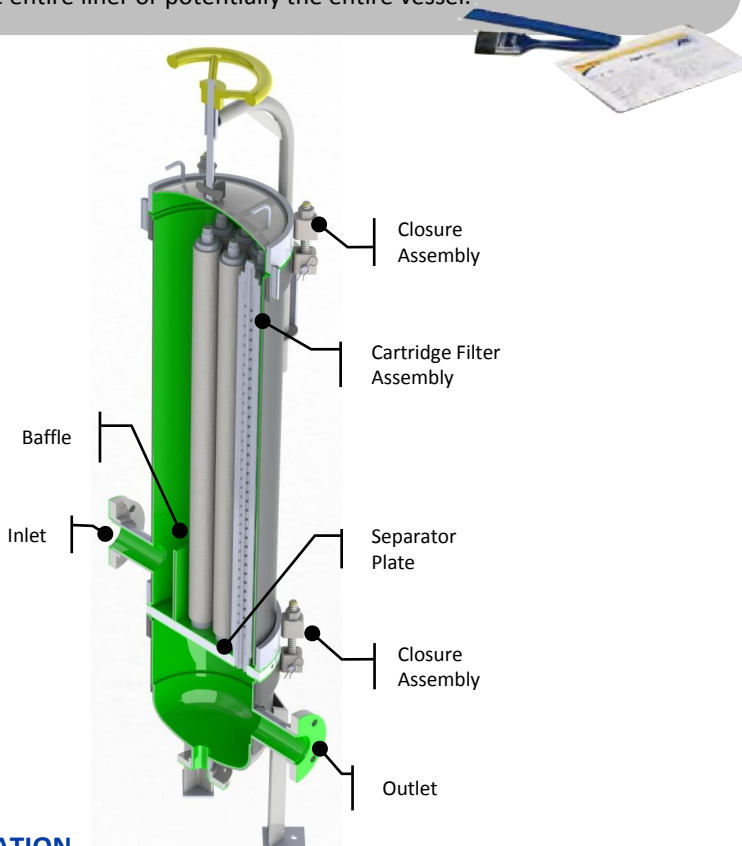
BENEFITS

- High gloss finish reduces drag and improves fluid flow efficiency on worn components
- Outlasts conventional coatings such as rubber-lining, epoxies and paints
- Tough resin structure resists thermal-mechanical shock
- Outstanding adhesion insures reliable performance against corrosion under the film
- Labor and downtime are reduced due to ease of application and quick curing formula
- Performs well under fluctuating chemical environments
- Convenient on-site repair kits help eliminate extensive off site repair costs and extended down time
- Cures quickly at room temperature

ON SITE REPAIR KITS

Every ceramic lined housing is equipped with a on-site lining repair kit. If at any time the lining becomes damaged, the easy to use kit allows you to recoat the damaged area.

The lining cures at room temperature, is easy to apply and is easy to prepare without having to replace the entire liner or potentially the entire vessel.



Technical Specifications

Cured Density

1,5 g/cc (94 lb/ft³)

Flexural Modulus

5,5 x 10⁴ kg/cm² (7.9 x 10⁵ psi)

Tensile Strength

270 kg/cm² (3,800 psi)

Tensile Adhesion

>140 kg/cm² (>2,000 psi)

Shore D Hardness

85

Maximum Temperature

Wet surface @ 52°C (125 °F)

Dry surface @ 80 °C (175 °F)

INDUSTRIAL APPLICATION

Saline Protector filters are ideal for a variety of applications where the presence of occurs.

SEAWATER

DESALINATION

BRACKISH WATER

BRINE WATER

For pricing or to order, please contact



204 North Link Lane #7

Fort Collins, CO 80524

Office 970-204-4758

Fax 970-204-4764

brandon@industrialfiltersource.com

SP SERIES

Ceramic Lined
Cartridge Filter Housings
ASME

Housing Specifications

Inlet/Outlet
2" - 20" Flat Face Flange

Dirty Drain
2" Flat Face Flange

Clean Drain
2" Flat Face Flange

Vent
2" Flat Face Flange

Certifications

- U
- UM
- CE
- NB
- CRN

Nozzle Configuration

A – Side in/Side out (Standard)
D – Side in/Side out, Same Side

Gasket Options

(-) – BN – Buna N (Standard)
ED – EPDM
SI – Silicone
VI – Viton
TF – Teflon

Closure Assembly Options

(-) – K1 – Standard Mechanical Davit
(standard for 18" and up)
(-) – K2 – Hinge (standard for 16")
K3 – Hydraulic Jack Davit Side
K4 – Hydraulic Jack Davit Top

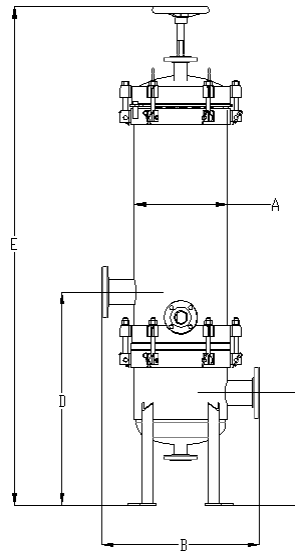
Accessories

DP Gauges
Safety Relief Valves
Vent Valves
Drain Valves
Air Eliminator

Other Options

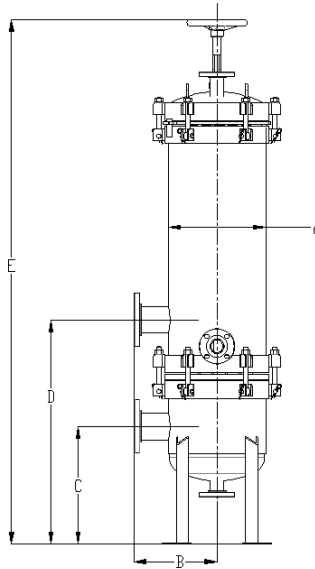
Stainless Steel bolting
Skid Mounting
Duplexing

STANDARD MODEL CONFIGURATIONS



STYLE A

ADDITIONAL MODEL CONFIGURATIONS



STYLE D

For pricing or to order, please contact



204 North Link Lane #7
Fort Collins, CO 80524
Office 970-204-4758
Fax 970-204-4764

brandon@industrialfiltersource.com