



Fil-Trek

L SERIES

Lined Cartridge Filter Housing
ASME Design
Universal



Water



Desalination



Chemicals



Electronics



Oil/Gas



Air/Gas



Inks/Paints/ Coatings



Power



Coolants



Pulp & Paper

L SERIES Lined Cartridge Filter Housings

- Multi-purpose industrial ASME "U" & "UM" code housings.
- Excellent for sea water or other corrosive applications.
- Accepts multiple 30", 40" & 50" cartridges.
- 150psig (10.3bar) @ 250°F(121.1°C) design pressure.
- Vessels available in carbon steel, with various lining options
- Cost effective solution in comparison to AL6XN or other duplex steels.
- Swing bolt closure allows for quick element change out.

For pricing or to order, please contact



204 North Link Lane #7
Fort Collins, CO 80524
Office 970-204-4758
Fax 970-204-4764

brandon@industrialfiltersource.com

L SERIES

Lined Cartridge Filter Housing
ASME Design
Universal

HOUSINGS SPECIFICATIONS

Inlet/Outlet
3"-20" Flat Face Flange

Dirty Drain
2" Flat Face Flange

Clean Drain
2" Flat Face Flange

Vent
2" Flat Face Flange

Gauges
1/2" NPT

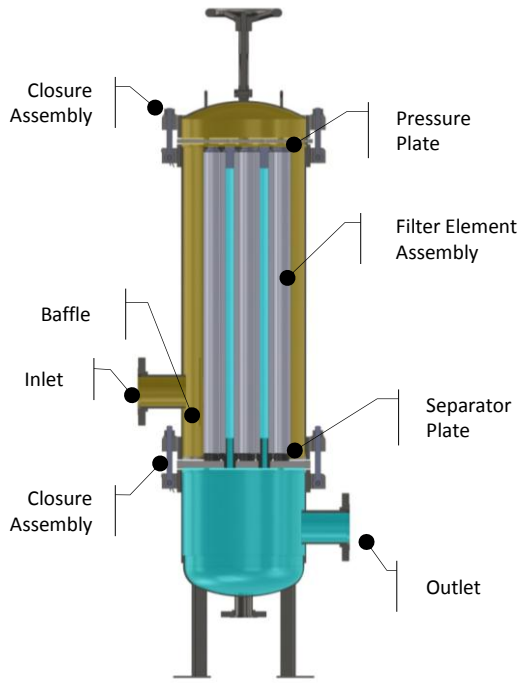
Certifications

- U
- UM
- CE
- NB
- CRN

MODEL FLOW RATES

MODEL	# OF FILTERS	FLOW RATE (GPM)	MAX INLET/OUTLET	DESIGN
L10	9	180	3"	Split
L12	12	240	4"	Split
L14	17	340	4"	Split
L16	22	440	6"	Split
L18	29	580	6"	Split
L20	37	740	6"	Split
L22	44	880	8"	Split
L24	52	1040	8"	Split
L26	65	1300	8"	Split
L28	80	1600	8"	Split
L30	90	1800	10"	Split
L32	105	2100	10"	Split
L34	120	2400	12"	Split
L36	130	2600	12"	Split
L38	150	3000	12"	Split
L40	170	3400	14"	Split
L42	185	3700	14"	Split
L44	200	4000	16"	Split
L46	225	4500	16"	Split
L48	250	5000	16"	Split
L50	275	5500	18"	Split
L52	290	6000	18"	Split
L54	320	6400	18"	Split
L56	340	6800	20"	Split
L58	360	7200	20"	Split
L60	400	8000	20"	Split

For maximum efficiency/product life, the flow rates are based on water at 5gpm/10". Actual Flow rate is dependent on fluid viscosity, cartridge micron rating, contaminant and type of media.



For pricing or to order, please contact



204 North Link Lane #7
Fort Collins, CO 80524
Office 970-204-4758
Fax 970-204-4764
brandon@industrialfiltersource.com

MATERIAL OF CONSTRUCTION	MAX. OPERATING PRESSURE (PSI @250°F)	MAX. DESIGN TEMP
CARBON STEEL	150 psi (10.3bar)	300°F (150°C)
304 STAINLESS STEEL	150 psi (10.3bar)	300°F (150°C)
316 STAINLESS STEEL	150 psi (10.3bar)	300°F (150°C)

MODEL DIMENSIONAL DETAILS

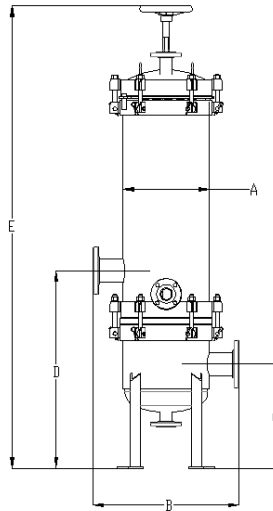
MODEL	SHIPPING WEIGHT (LBS)	A	B	C	D	E
L10	300	10"	27"	15"	30"	88"
L12	375	12"	30"	17"	30"	89"
L14	525	14"	30"	17"	34"	90"
L16	600	16"	32"	17"	34"	93"
L18	700	18"	34"	18"	38"	94"
L20	900	20"	36"	19"	40"	95"
L22	1000	22"	38"	20"	44"	98"
L24	1200	24"	40"	24"	50"	103"
L26	1350	26"	42"	26"	40"	104"
L28	1450	28"	42"	30"	40"	105"
L30	1500	30"	44"	30"	42"	105"
L32	1700	32"	46"	32"	44"	108"
L34	1800	34"	46"	32"	46"	108"
L36	1950	36"	48"	34"	48"	112"
L38	2100	38"	50"	34"	50"	116"
L40	2200	40"	54"	36"	52"	118"
L42	2500	42"	58"	38"	54"	119"
L44	2575	44"	60"	38"	56"	120"
L46	2650	46"	64"	38"	59"	120"
L48	2750	48"	66"	40"	62"	122"
L50	3000	50"	70"	42"	66"	126"
L52	3100	52"	74"	44"	66"	130"
L54	3150	54"	78"	46"	68"	133"
L56	3300	56"	72"	48"	68"	136"
L58	3400	58"	76"	50"	70"	138"
L60	3600	60"	80"	52"	72"	140"

*Above dimensions are for 40" Element, Style A. For other options contact factory. **For 30 & 50in element dimensions, refer to the chart below. ***Given dimensions are approximate only, for true dimensions contact factory.

REFERENCE CHART LEGEND

A	OUTSIDE DIAMETER
B	FLOOR TO INLET
C	FLOOR TO OUTLET
D	FACE TO FACE
E	OVERALL HEIGHT (SW/VB)

STYLE A SPLIT-BODY



PRODUCT NOMENCLATURE

L	18	26	4	6F	RL	-	-	-
MODEL	HOUSING DIAMETER	# OF FILTERS	LENGTH	CONNECTION TYPE	LINING MATERIAL	CONFIGURATION	FILTER CONFIG	O-RING
L ASME CODE	SEE TABLE	SEE TABLE	3 - 30	SEE TABLE	KY KYNAR RL RUBBER TE TEFLON NP NEOPRENE PC PVC BP BAKED PHENOLIC EX EPOXY HR HALAR	SEE SIDE PANEL FOR OPTIONS		

Lined Cartridge Filter Housing ASME Design Universal

HOUSINGS OPTIONS

Configuration Options

- A – Side in/side out (standard)
- C – Side in/Bottom out

O-Ring Options

- (-) – Buna-N (standard)
- ED – EPDM
- VI – Viton
- SI – Silicone
- TEV – Teflon encapsulated Viton
- TF – Teflon

Head Lift Options

- (-) – K1 – Head lift (standard)
- K2 – Hinge
- K3 – Hydraulic Jack Davit Side
- K4 – Hydraulic Jack Davit Top

Accessories

- Direct Reading Gauge
- DP Gauge
- Safety Relief Valves
- Vent Valves
- Drain Valves
- Air Eliminator

Filter Configuration

- E1 – Double Open End
- E2 – DOE with Gasket Ends
- E3 – DOE with 1" Ext. Core
- E4 – SOE Flat End 222 Open End
- E5 – SOE Fin End 222 Open End
- E8 – SOE Plastic Spring Top 222
- E9 – SOE Plastic Spring Top

For pricing or to order, please contact



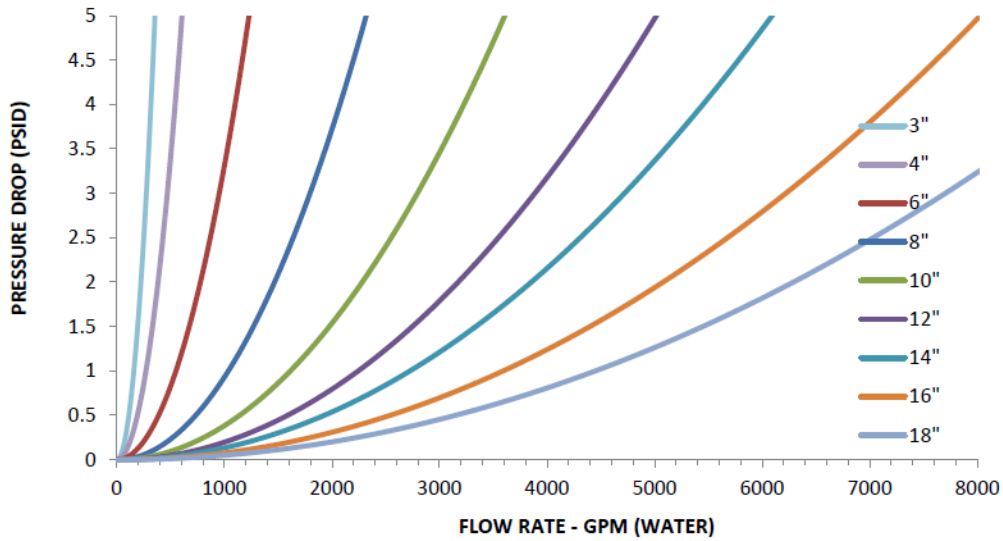
204 North Link Lane #7
Fort Collins, CO 80524
Office 970-204-4758
Fax 970-204-4764

brandon@industrialfiltersource.com

L SERIES

Lined Cartridge Filter Housing
ASME Design
Universal

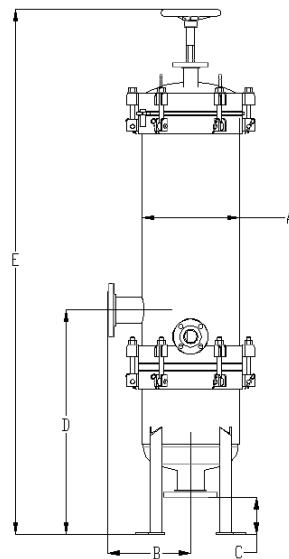
FLOW CHART



ADDITIONAL MODEL CONFIGURATIONS

STYLE C

Side In/Bottom Out



For pricing or to order, please contact



204 North Link Lane #7
Fort Collins, CO 80524
Office 970-204-4758
Fax 970-204-4764
brandon@industrialfiltersource.com